



COMPANY SNAPSHOT

Listed on the Australian Securities Exchange in 1987 (ASX Code SRI)

PROJECTS

Paterson North Project, north-west Western Australia 80% and increasing to 100%* Cu, Au, Ag, Mo, W discovery at Obelisk

(*subject to royalty Ming Gold)

Kitgum-Pader Project, Northern Uganda 100% and reducing to 49% (JV with Rio Tinto) Ni, Cu, Co sulphide discovery at Akelikongo

Portfolio of Royalties with near term production income – Venturix (VXR) Sulphur Springs

ISSUED CAPITAL

1707 million Ordinary Shares

MARKET CAPITALISATION

\$13.6m (at 0.8 cents per share)

CASH ON HAND

\$3.1m unrestricted cash (at 31 March 2019)

TOP 20 SHAREHOLDERS

34%

BOARD AND MANAGEMENT

Lynda Burnett – Managing Director/CEO

Craig McGown – Chairman

Tim Kennedy – Non-Executive Director

Karen Field – Non-Executive Director

Tara Robson – CFO and Company Secretary

Actively exploring two greenfield mineral discoveries in highly prospective mineral provinces in Western Australia and Uganda

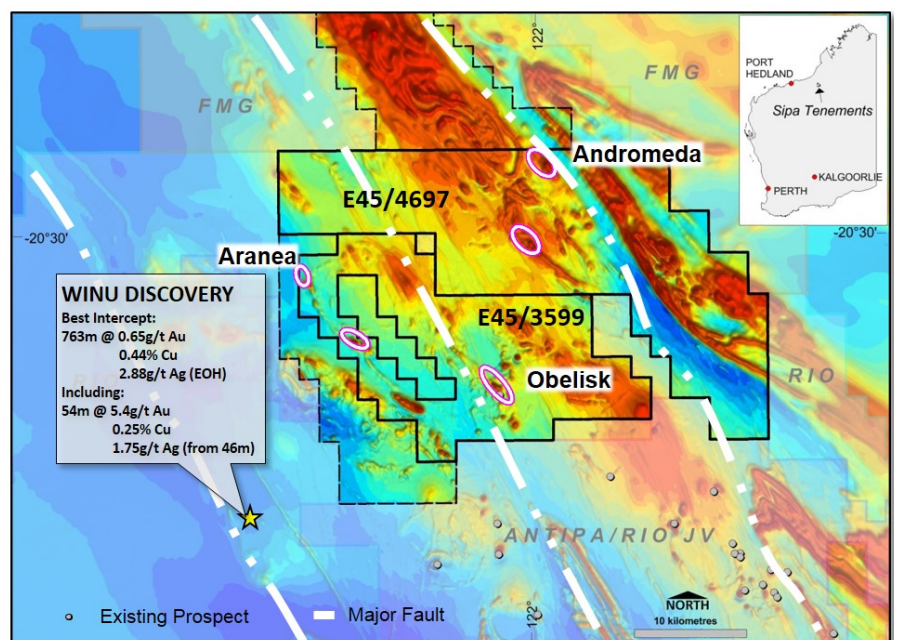
Generating new exploration opportunities through the application of good geoscience with new data.

Paterson North Project

Sipa's project adjoins Rio Tinto's new Winu Copper Gold Silver discovery 10km to the west.

Sipa's Paterson North Project in the North West of Western Australia is an exciting new exploration discovery for the Company in one of the most highly endowed yet under-explored mineral provinces in Australia.

- At Obelisk an intrusive related large copper >0.1% alteration halo with high grade vein hosted Gold and Copper plus Silver, Molybdenum, and Tungsten has been discovered with further exploration underway.
- SkyTEM airborne EM survey commenced May 2019.
- Drilling scheduled for July 2019 partially funded by new WA Government EIS grant awarded for field season for Obelisk south and Aranea.

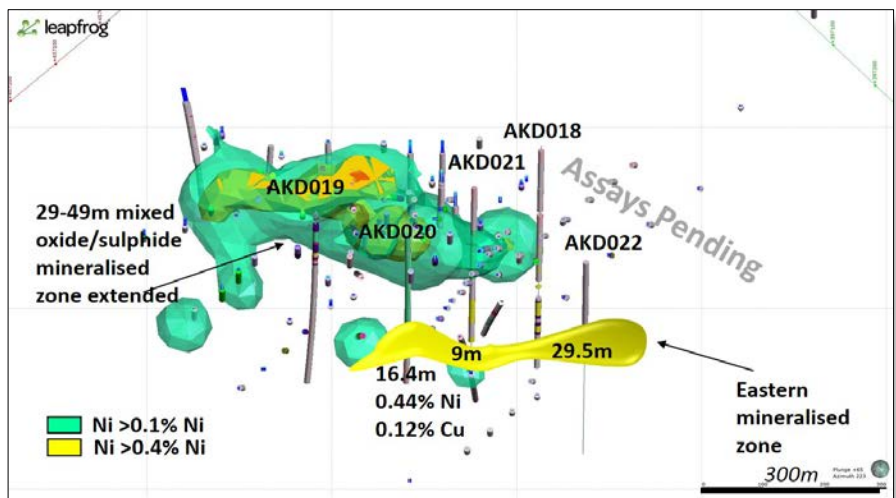


Kitgum-Pader Base Metals Project in northern Uganda

US\$59M Farm-in with Rio Tinto sees active regional exploration and extension of Akelikongo nickel copper sulphide mineralisation

The Kitgum-Pader project is a significant belt scale project comprised of numerous ultramafic intrusive hosted Nickel Copper sulphide targets. The most advanced is the outcropping Akelikongo Nickel Copper sulphide discovery (see Leapfrog image below) – one of the most significant recent nickel sulphide discoveries globally.

3 new holes have intersected an emerging eastern zone open down plunge, assays pending for AKD 018, 21 and 22.



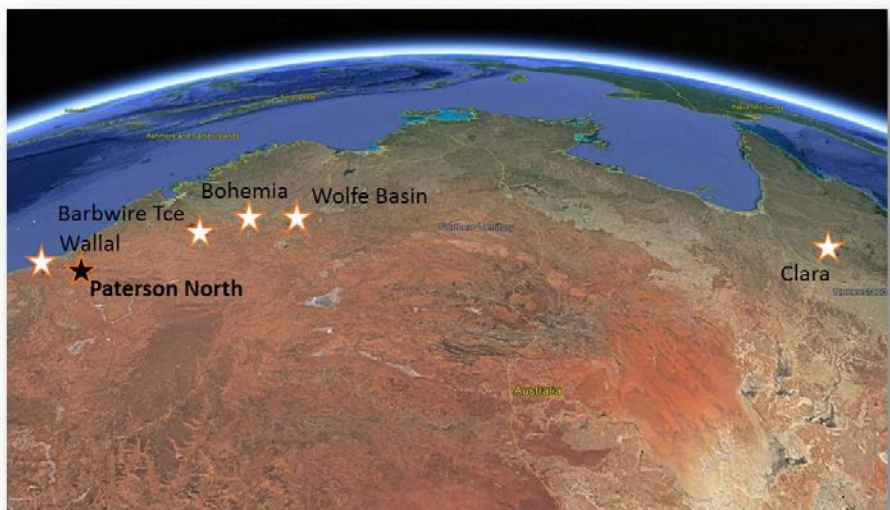
Newly Generated Projects 100% Sipa

Barbwire Terrace and Bohemia, Lennard Shelf WA – Devonian to Ordovician Carbonate hosted Zn-Pb mineralisation

Clara – Croydon Gold Province Qld

Wolfe Basin – Sediment Hosted Copper WA

Wallal – Paterson North Cu-Au



web www.sipa.com.au

Address unit 8 12-20 Railway Rd
Subiaco WA 6008

Email info@sipa.com.au

Follow us on Twitter
@siparesources and LinkedIn